

2025-2026 PRODUCT CATALOGUE



Precision **Steel Hollow Sections** (SHS & RHS)

MADE IN IRAN

Steel Hollow Sections

Direct-Formed Square & Rectangular Hollow Sections

Steel SHS and RHS

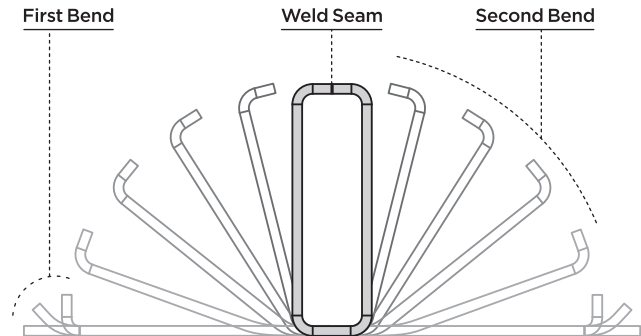
Square Hollow Sections (SHS) and **Rectangular Hollow Sections (RHS)** are manufactured from hot-rolled, cold-rolled, and galvanized steel coils using **Direct Forming Technology (DFT)** by advanced Italian engineering solutions.

In this process, steel coils are first slit into strips, then continuously **formed directly into square and rectangular hollow sections**, eliminating the need for round tube production as an intermediate step.

This manufacturing method improves dimensional accuracy, optimizes material distribution, and reduces forming stresses. It enables the production of up to **202 different hollow section profiles** within a dimensional range of **20x20 to 200x130 mm** and wall thicknesses from **0.8 to 8.0 mm**, making it ideal for high-volume industrial production.

Welding is performed using **High-Frequency Induction Welding (HFIW)**, resulting in a clean and uniform weld seam that offers reliable mechanical performance for both structural and industrial applications.

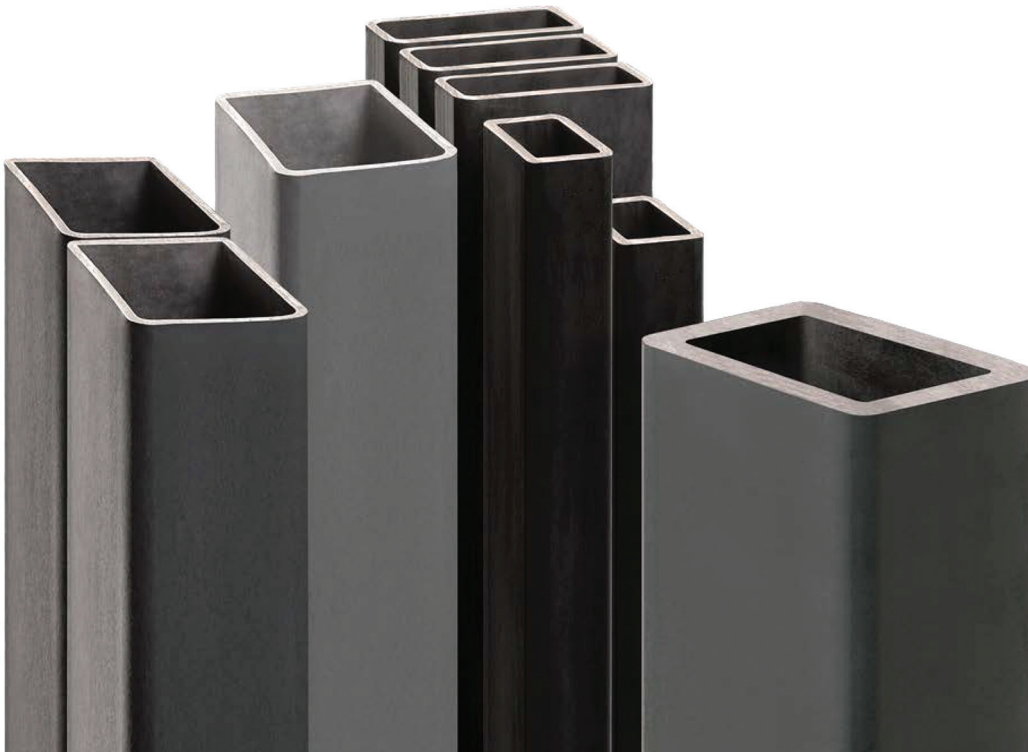
The combination of high-frequency induction welding and efficient forming technology results in **lighter sections** without compromising strength, delivering **cost-effective solutions** with high production speed and capacity.



Direct Forming Technology (DFT)

Technical Specifications

- **Section Size Range:** 20x20 - 130x200 mm
- **Wall Thicknesses Range:** 0.8 - 8.0 mm
- **Length:** 6,000 mm
- **Material:** Hot-Rolled, Cold-rolled, Galvanized Steel
- **Forming:** Direct Forming Technology (DFT)
- **Welding:** High-Frequency Induction Welding (HFIW)
- **Corner Radius:** Customizable upon Request



Steel Hollow Sections

Direct-Formed Square & Rectangular Hollow Sections

Standard Hollow Section Production Range							
Section Size (mm)	Wall Thickness (mm)						Length (mm)
	1.5	1.8	2.0	2.5	3.0		
20x20	✓	✓	✓		✓		6,000
25x25	✓	✓	✓				6,000
30x20	✓	✓	✓				6,000
30x30	✓	✓	✓				6,000
35x35	✓	✓	✓	✓			6,000
40x20	✓	✓	✓				6,000
40x25	✓	✓	✓				6,000
40x30	✓	✓	✓				6,000
40x40	✓	✓	✓	✓	✓		6,000
50x20	✓	✓	✓				6,000
50x30	✓	✓	✓				6,000
50x40	✓		✓	✓			6,000
50x50	✓		✓	✓			6,000
55x55				✓			6,000
60x20	✓						6,000
60x25			✓				6,000
60x30	✓	✓	✓	✓			6,000
60x40	✓	✓	✓	✓	✓		6,000
60x50	✓		✓	✓			6,000
60x60	✓	✓	✓	✓	✓		6,000
65x65				✓			6,000
70x30	✓	✓	✓				6,000
70x70	✓	✓	✓	✓	✓		6,000
75x75			✓	✓	✓		6,000
80x40	✓	✓	✓	✓	✓		6,000
80x60	✓	✓	✓	✓			6,000
80x80						✓	6,000
90x90						✓	6,000
100x40	✓	✓	✓	✓	✓		6,000
100x50	✓	✓	✓	✓	✓		6,000
100x60						✓	6,000
120x80						✓	6,000
120x120						✓	6,000
130x130						✓	6,000
140x140						✓	6,000



JavanSteel

No.10, Sanaye Felezi Crossroads, 17th Shahrivar St
Shad Abad, Fath HWY, Tehran 1378717813, Iran
Tel: +98 (21) 6679 1234 Fax: +98 (21) 6679 1235
www.javansteel.com mail@javansteel.com



Instagram



SCAN ME