

2025-2026 PRODUCT CATALOGUE

Industrial **Stainless Steel & Superalloy Flanges**

Industrial Flanges

Engineered for Reliable Piping Systems

Stainless Steel & Superalloy Flanges

Flanges are sourced from qualified forging manufacturers that utilize **advanced production lines based on German engineering and manufacturing practices**. These processes include controlled forging, heat treatment, and CNC machining, all designed to ensure consistent quality and dimensional accuracy in accordance with relevant international standards.

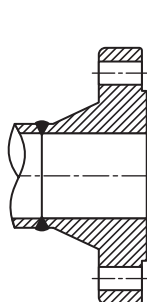
Forged stainless steel and superalloy flanges are provided in accordance with **BS EN, ANSI, ASME, and DIN standards**. They are suitable for piping systems used in the petrochemical, refinery, chemical, food, and pharmaceutical industries. These flanges are specifically selected to meet project requirements where dimensional accuracy, material integrity, and reliable performance are crucial.

Custom flanges can be produced according to international standards in various sizes, pressure classes, facing types, and surface finishes, with **individual weights of up to 2 tons each**.

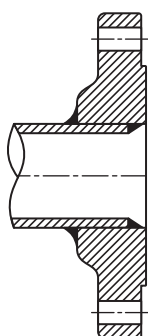


Flange Types

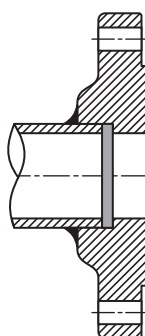
Standard flange types are provided for industrial piping applications, with custom designs, including **hubbed blind flanges** and **orifice flanges**, available upon request to meet specific project requirements.



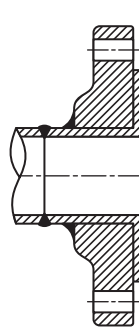
Weld Neck



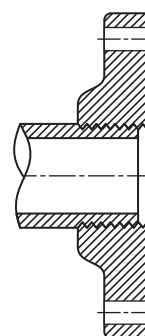
Slip On



Socket Weld



Lap Joint



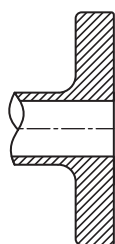
Threaded



Blind

Flange Facing Types

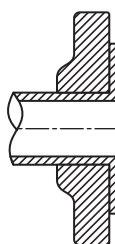
Standard facing types are provided to meet various sealing needs, with **custom facing designs** available upon request to comply with project specifications and relevant standards.



Flat Face



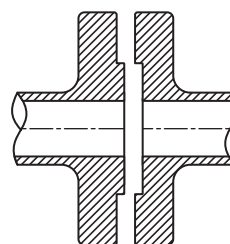
Raised Face



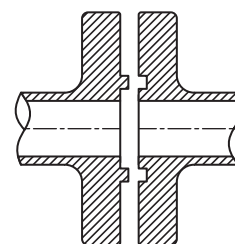
Lap Joint



Ring Joint



Male & Female



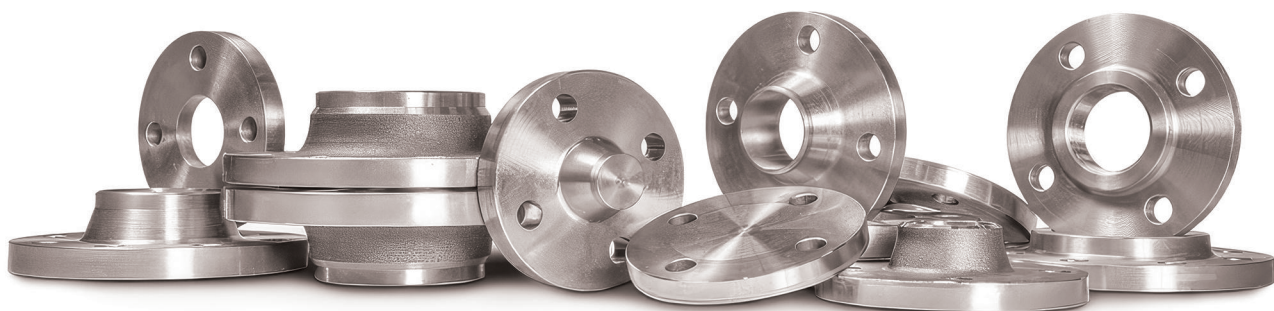
Tongue & Groove

Industrial Flanges

Engineered for Reliable Piping Systems

Stainless Steel & Superalloy Flange Production Range			
Specification	Item Type	Pressure Class	Size Range
ASME / ANSI B16.5	WNRF/SORF/BLRF/SWRF LJ/THDR/HHB/RTJ100	150, 300, 400, 600, 900, 1500, 2500LBS	1/2" - 12"
		150, 300, 400, 600, 900, 1500LBS	14" - 24"
ASME / ANSI B16.47	WNRF/BLRF (Series A & B)	75, 150, 300LBS	26" - 60"
		400, 600LBS	26" - 42"
		900LBS	26" - 30"
ASME/ANSI B16.36	WNRF/SORF/THDRF (Orifice Flanges)	300, 400, 600, 900, 1500, 2500LBS	1" - 12"
BS EN 1092-1 Flanges	Type 01, Type 02, Type 04, Type 05, Type 11, Type 12, Type 13, Type 21, Type 32, Type 33, Type 34, Type 35, Type 36, Type 37	PN2.5, PN6, PN10, PN16,	DN 10 - DN 1500
		PN25	DN 10 - DN 1200
		PN40, PN63	DN 10 - DN 600
		PN100, PN160	DN 10 - DN 400
		PN250, PN320	DN 10 - DN 250
DIN Flanges	DIN2527, DIN2566, DIN2573, DIN2576, DIN2641, DIN2642, DIN2655, DIN2656, DIN2627, DIN2628, DIN2629, DIN2631, DIN2632, DIN2633, DIN2634, DIN2635, DIN2636, DIN2637, DIN2638, DIN2673	PN2.5, PN6, PN10, PN16,	DN 10 - DN 1500
		PN25	DN 10 - DN 1200
		PN40, PN63	DN 10 - DN 600
		PN100, PN160	DN 10 - DN 400
		PN250, PN320	DN 10 - DN 250
BS 4504 Section 3.1	Code 111, Code 112, Code 113, Code 133, Code 101, Code 102, Code 104, Code 105	PN2.5, PN6, PN10, PN16,	DN 10 - DN 1500
		PN25	DN 10 - DN 1200
		PN40, PN63	DN 10 - DN 600
		PN100, PN160	DN 10 - DN 400
		PN250, PN320	DN 10 - DN 250
BS 10	Welding Neck, Slip-on, Blind, Bossed Slip-on & Blind	TABLE - A, D, E, F, H, J, K, R, S, T	DN 15 - DN 600
ASME/ANSI B16.9 & MSS SP-3	Stub end - Type: A, B, C	S10, S40, S80	1/2" - 24"

Custom flanges can be manufactured in various bore schedules, facing types, and surface finishes, in accordance with applicable international standards including JIS, EN/NF, AWWA, AS, and MSS, with unit weights up to 2 tons per piece.





JavanSteel

No.10, Sanaye Fellezi Crossroads, 17th Shahrivar St
Shad Abad, Fath HWY, Tehran 1378717813, Iran
Tel: +98 (21) 6679 1234 Fax: +98 (21) 6679 1235
www.javansteel.com mail@javansteel.com



Instagram



SCAN ME