

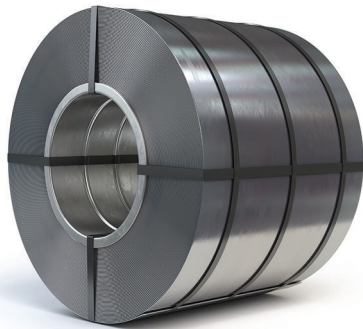
2025-2026 PRODUCT CATALOGUE

Premium **Flat Steel Coils** & Advanced Forming Solutions

MADE IN IRAN

Flat Steel Coils

HRC, CRC, GI & PPGI – Reliable Steel Coil Solutions

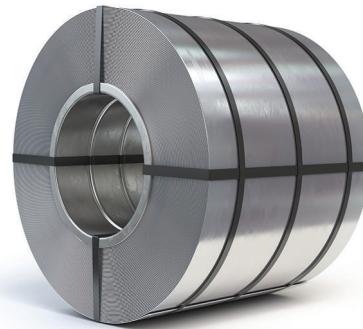


Hot Rolled Steel Coils (HRC)

Hot-rolled steel coils are manufactured from steel slabs using a controlled hot rolling process.

These coils provide dependable strength and formability and are used in structural sections, storage tanks, shipbuilding, automotive components, and heavy fabrication.

Thickness	1.50 - 8.00 mm
Width	1000 / 1250 / 1500mm
Length	Standard or custom (upon request)

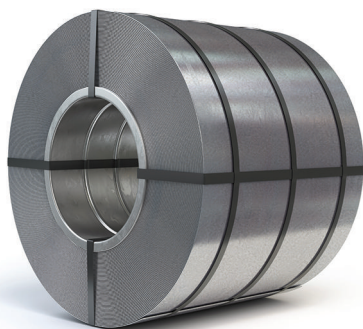


Cold Rolled Steel Coils (CRC)

Cold-rolled steel coils are produced by pickling and cold rolling hot-rolled material.

This process ensures improved thickness accuracy and a smooth surface finish, making them suitable for building components, furniture manufacturing, and precision flat products.

Thickness	0.30 - 3.00 mm
Width	1000 / 1250 mm
Length	Standard or custom (upon request)

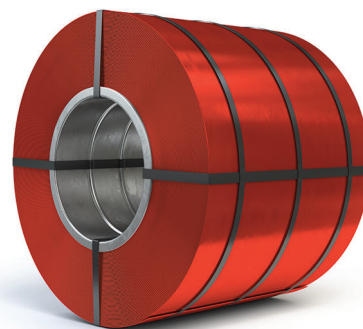


Galvanized Steel Coils (GI)

Hot-dip galvanized steel coils are produced by applying a uniform zinc coating to cold-rolled steel.

This process provides excellent resistance to corrosion and oxidation, making these coils suitable for construction, automotive, and general industrial applications.

Thickness	0.14 - 5.00 mm
Width	1000 / 1250 mm
Length	Standard or custom (upon request)



Pre-Painted Galvanized Steel Coils (PPGI)

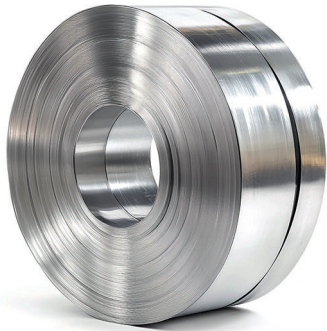
Pre-painted galvanized steel coils are produced by applying oven-baked paint coatings to hot-dip galvanized steel.

This process improves corrosion resistance, weather durability, and surface appearance, making PPGI coils ideal for roofing, cladding, and architectural applications.

Thickness	0.16 - 0.50 mm
Width	1000 / 1250 mm
Length	Standard or custom (upon request)

Flat Steel Coils

HRC, CRC, GI & PPGI – Reliable Steel Coil Solutions



Slitting & Cut-to-Length Services

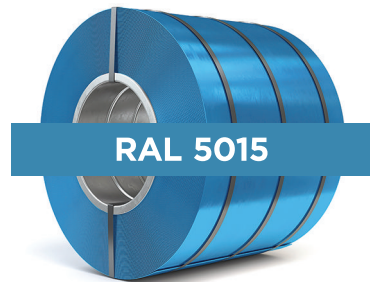
We offer precision slitting and cut-to-length services based on customer requirements.

Slitting is available for steel coils with thicknesses from 0.18 to 2.5 mm, a minimum slit width of 28 mm, and up to 42 slits per coil, delivering clean, burr-free edges and uniform winding.

Cut-to-length services are provided for steel sheets with thicknesses from 0.14 to 8.0 mm, with a minimum length of 400 mm, ensuring accurate dimensions and smooth edges for further processing.

Available RAL Color Options

Pre-painted galvanized steel coils are produced in a range of standard RAL colors commonly used for roofing and cladding applications, ensuring consistent appearance and reliable performance.



RAL 5015



RAL 9005



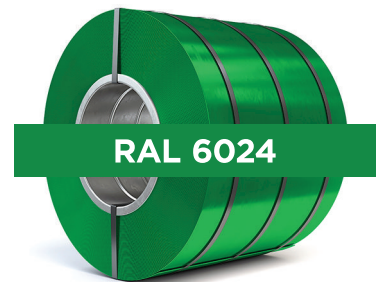
RAL 9016



RAL 2004



RAL 1028



RAL 6024



RAL 8017



RAL 8004



RAL 3000

Formed Steel Products

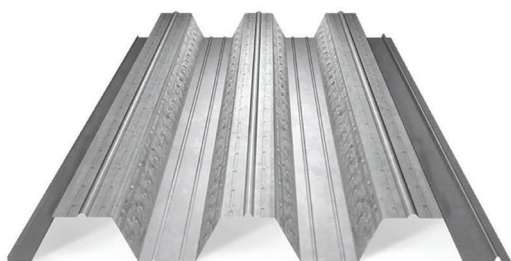
Roll-Formed Profiles for Roofing, Cladding & Structural Applications

Advantages & Applications

Formed steel profiles provide fast and easy installation with an appealing appearance and cost-effective performance compared to similar products.

They maintain color stability and structural integrity under various weather conditions, including moisture and vegetation.

Due to their lightweight design, these profiles enhance seismic safety and offer high resistance to humidity and atmospheric conditions. Their durable design ensures long-term performance without cracking or degradation over time.

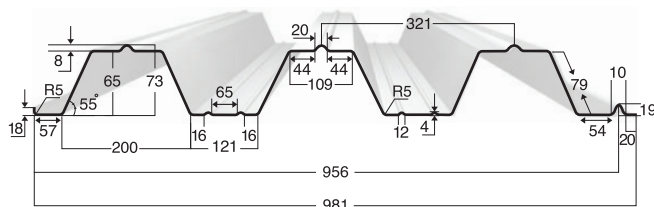


Profiled Steel Roof Deck

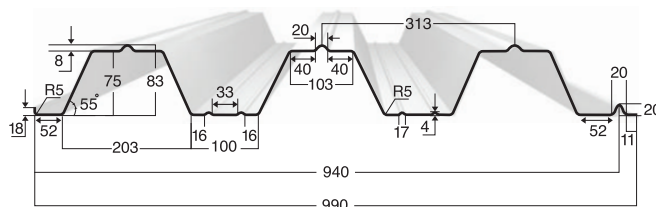
Designed for floor systems, enabling fast installation, high structural performance, and improved construction safety.

Our galvanized steel profiles, available in thicknesses of 0.65 to 1.25 mm and standard widths of 1250 mm, feature 65 and 75 mm rib depth to meet various load requirements. Ideal for multi-storey buildings, commercial structures, and parking facilities, reducing slab weight, construction time, and overall project costs.

Pitch	65 mm
Overall Width	981 mm
Effective Width	956 mm



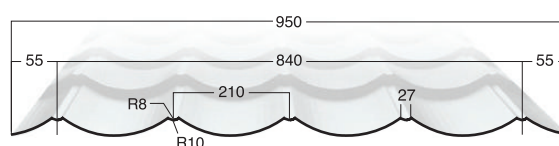
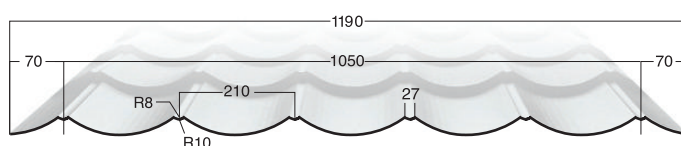
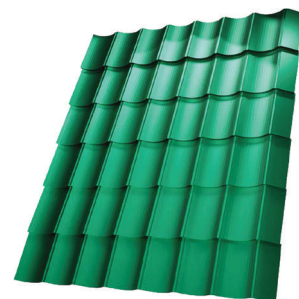
Pitch	75 mm
Overall Width	990 mm
Effective Width	940 mm



Palermo - Swedish Tile Roofing Profile

Palermo Swedish tile roofing profiles are produced from pre-painted galvanized steel coils with widths of 1000 and 1250 mm, offering a lightweight and durable roofing solution with the appearance of traditional roof tiles.

Material	PPGI	Overall Width	950 / 1190 mm
Thickness	0.30 - 0.60 mm	Effective Width	840 / 1050 mm



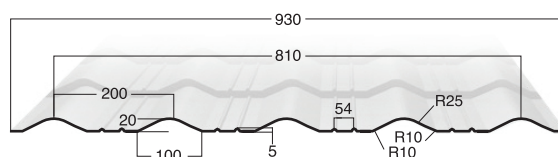
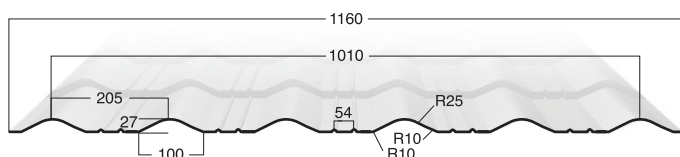
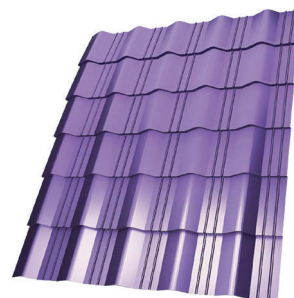
Formed Steel Products

Roll-Formed Profiles for Roofing, Cladding & Structural Applications

Genova 2 - Italian Tile Roofing Profile

Genova 2 Italian tile roofing profiles are produced from pre-painted galvanized steel coils with widths of 1000 and 1250 mm and feature two longitudinal lines, offering a lightweight and durable roofing solution with the appearance of traditional roof tiles.

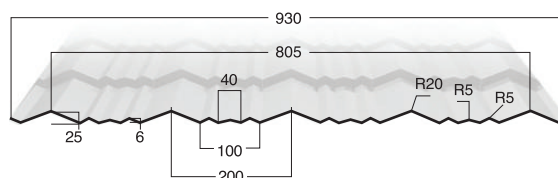
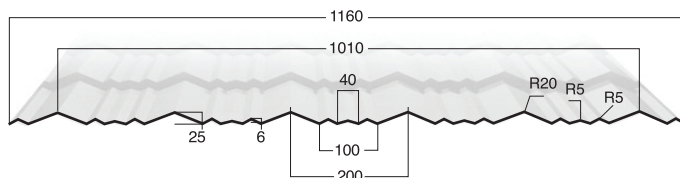
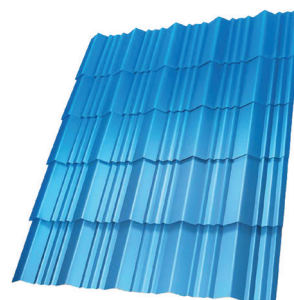
Material	PPGI	Overall Width	950 / 1190 mm
Thickness	0.30 - 0.60 mm	Effective Width	840 / 1050 mm



Genova 3 - French Tile Roofing Profile

Genova 3 French tile roofing profiles are produced from pre-painted galvanized steel coils with widths of 1000 and 1250 mm and feature three longitudinal lines, offering a lightweight and durable roofing solution with the appearance of traditional roof tiles.

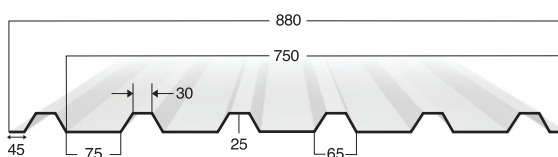
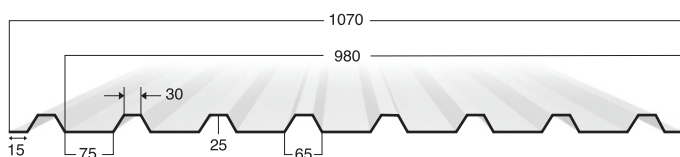
Material	PPGI	Overall Width	930 / 1160 mm
Thickness	0.30 - 0.60 mm	Effective Width	805 / 1010 mm



Trapezoidal Steel Profile

Trapezoidal steel profiles are roll-formed from galvanized or pre-painted steel coils with widths of 1000 and 1250 mm, providing durable, efficient roofing and cladding solutions for industrial and commercial buildings.

Material	GI, PPGI	Overall Width	880 / 1070 mm
Thickness	0.30 - 0.70 mm	Effective Width	750 / 1000 mm



Formed Steel Products

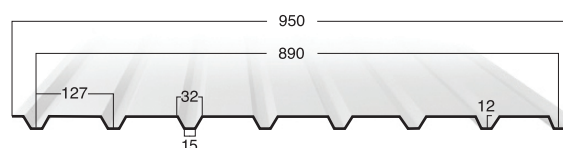
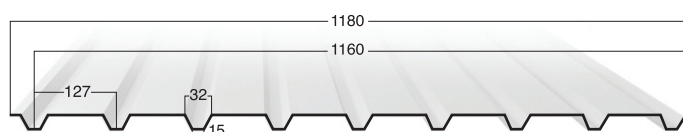
Roll-Formed Profiles for Roofing, Cladding & Structural Applications

Dumpa - Steel Cladding & Liner Panel

Dumpa steel cladding and liner panels are roll-formed from galvanized or pre-painted steel coils with widths of 1000 and 1250 mm, offering clean lines and durable performance for interior and exterior wall and ceiling applications.



Material	GI, PPGI	Overall Width	950 / 1180 mm
Thickness	0.30 - 0.70 mm	Effective Width	890 / 1160 mm

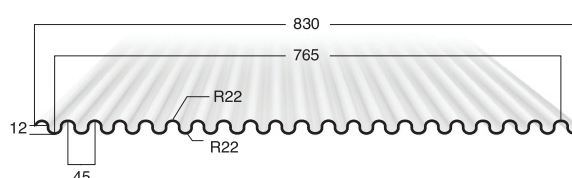
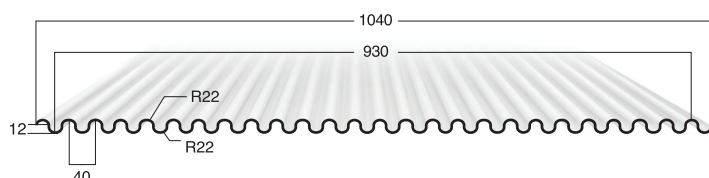


Small Corrugated Steel Profile

Small corrugated steel profiles are roll-formed from galvanized or pre-painted steel coils with widths of 1000 and 1250 mm, providing lightweight and durable solutions for roofing and cladding applications in industrial and commercial buildings.

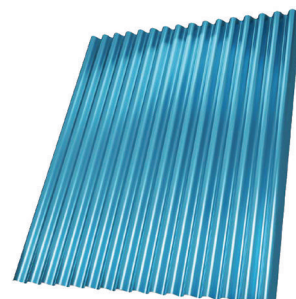


Material	GI, PPGI	Overall Width	830 / 1040 mm
Thickness	0.16 - 0.50 mm	Effective Width	765 / 930 mm

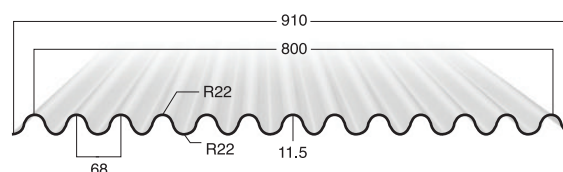
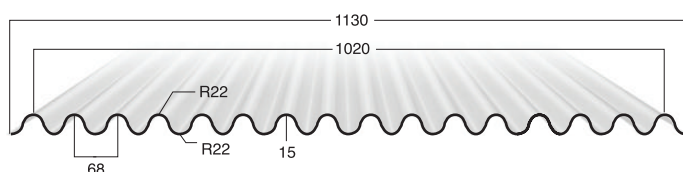


Corrugated Steel Profile - Type A

Type A corrugated steel profiles feature a 68 mm wave pitch, offering a tighter corrugation pattern. They are roll-formed from galvanized or pre-painted steel coils with widths of 1000 and 1250 mm, suitable for roofing and cladding applications.



Material	GI, PPGI	Overall Width	910 / 1130 mm
Thickness	0.20 - 0.50 mm	Effective Width	800 / 1020 mm



Formed Steel Products

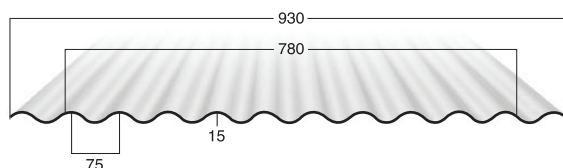
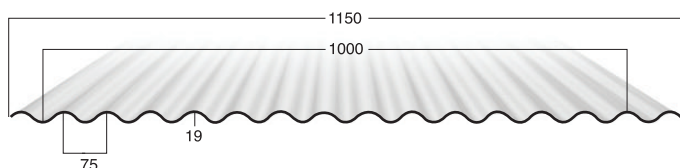
Roll-Formed Profiles for Roofing, Cladding & Structural Applications

Corrugated Steel Profile - Typa B

Type B corrugated steel profiles feature a 75 mm wave pitch, providing a more open profile. They are roll-formed from galvanized or pre-painted steel coils widths of 1000 and 1250 mm, suitable for roofing and cladding applications.

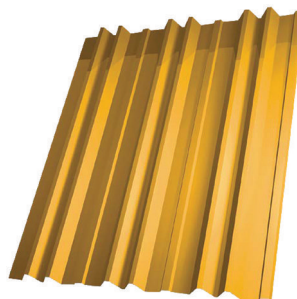


Material	GI, PPGI	Overall Width	930 / 1150 mm
Thickness	0.20 - 0.80 mm	Effective Width	780 / 1000 mm

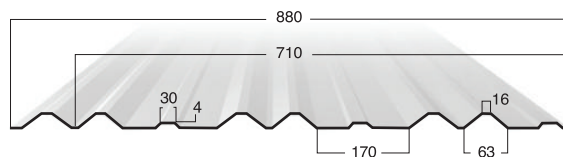
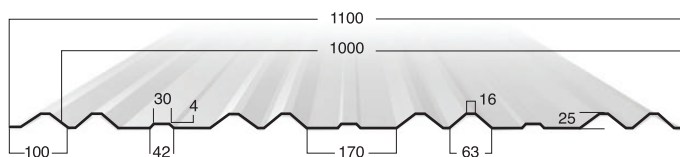


Shadowline Steel Profile

Shadowline steel profiles are roll-formed from galvanized or pre-painted steel coils with widths of 1000 and 1250 mm, featuring a double-rib design with a 63 mm pitch, suitable for modern architectural cladding applications.

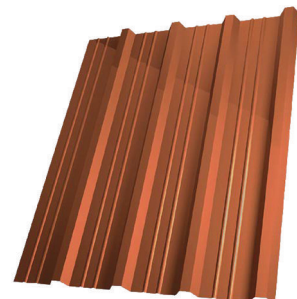


Material	GI, PPGI	Overall Width	880 / 1100 mm
Thickness	0.30 - 0.60 mm	Effective Width	710 / 1000 mm

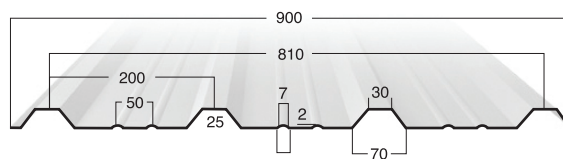
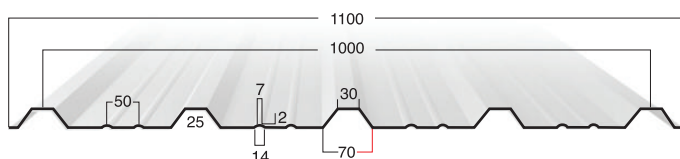


Modern Shadowline Steel Profile

Modern Shadowline steel profiles are roll-formed from galvanized or pre-painted steel coils with widths of 1000 and 1250 mm, featuring a single main rib with a 70 mm pitch and two raised lines for a clean, contemporary shadow effect.



Material	GI, PPGI	Overall Width	900 / 1100 mm
Thickness	0.30 - 0.50 mm	Effective Width	810 / 1000 mm





JavanSteel

No.10, Sanaye Fellezi Crossroads, 17th Shahrivar St
Shad Abad, Fath HWY, Tehran 1378717813, Iran
Tel: +98 (21) 6679 1234 Fax: +98 (21) 6679 1235
www.javansteel.com mail@javansteel.com



Instagram



SCAN ME